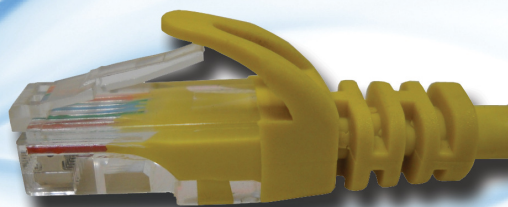


## DINTEK PowerMAX™ CAT 6 Patch Leads



### KEY FEATURES

- Molded boots prevent pin from bending and cables from kinking
- 24AWG stranded wire provides maximum flexibility.
- Brilliant colors make management a snap
- Fully tested to meet ANSI/TIA-568-C.2 category 6 requirement.
- LSZH Flame test as per IEC 60332-1
- The various colors are available to meet TIA/EIA-606 standards. The mechanical characteristics and transmission performance me

### APPLICATION

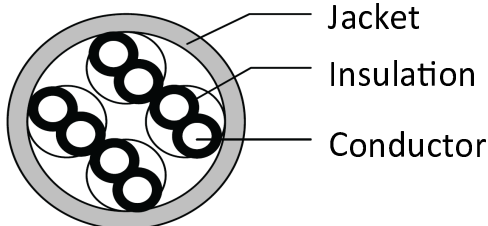
- Patch panel to patch panel connections.
- PC to information outlet connections.
- Information outlet to telecommunications closet connections.
- Equipment & DTE connections

### STANDARDS

- UL Verified
- ISO/IEC11801 2nd edition
- ANSI/TIA-568-C.2
- CENELEC EN 50173
- LSZH Flame test as per IEC 60332-1

### MECHANICAL FEATURES

- Twisted pair color code:  
Pair 1> blue, white/blue ring.  
Pair 2> orange, white/orange ring  
Pair 3> green, white/green ring  
Pair 4> brown, white/brown ring
- Conductor: 24AWG (7x0.195mm) stranded anneal copper wire
- Insulation material: HDPE
- Diameter of dielectric core: 1.0±0.05mm
- Insulation thickness: min at any point: 0.20mm
- Number of twist pairs: 4 pairs
- Assembly: 4 pairs of dielectric core shall be stranded in circular form
- Material of jacket: PVC/LSZH
- Thickness of jacket: AVG 0.66~0.70mm
- Nominal O.D: 5.6±0.2mm
- Jacket color: red,orange,yellow,green,blue,gray, etc
- RJ45 plug:Housing>polycarbonate  
Contact>copper alloy 50u" gold plated over nickel  
Strength>20lbs. min  
Durability>200 cycles min.
- Insulation resistance: 500 megaohms min. Molded boots prevent pin from bending and cables from kink.
- Wiring schemes: T568B



### DINTEK Category 6 Product Benefits

Category 6 Products exceed all TIA and ISO specifications for Category 5e/6 cabling systems and components

- They have been Independently confirmed for system performance

- Meets FCC parts 68
- ANSI/TIA-568-C.2
- ISO/IEC 11801

- DINTEK Cat 6 products can be warranted for 25 years

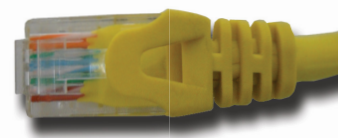
- Cat6 products are Interoperable with DINTEK and other standards compliant products

- Independently been confirmed for Gigabit Ethernet applications

- Having a single vendor solution ensures best system performance

- Our products meet or exceed performance requirements for existing and proposed high-speed network applications including:

- Voice; T1; ISDN
- 10BASE-T (IEEE 802.3)
- 16Mbps Token Ring (IEEE802.5)
- 100VG-AnyLAN (IEEE802.12)
- 100BASE-T Ethernet (IEEE802.3)
- 155/622Mbps 1.2/2.4 Gbps ATM
- 1000Mbps Gigabit Ethernet
- 550MHz Broadband Video



P/N	Description	Length(M)	Color	Std Pkg Qty
1201-04174	Cat.6 4 pair U/UTP patch cord	1	Gray	10
1201-04175	Cat.6 4 pair U/UTP patch cord	2	Gray	10
1201-04176	Cat.6 4 pair U/UTP patch cord	3	Gray	10
1201-04184	Cat.6 4 pair U/UTP patch cord	5	Gray	10

- Please contact us for any customized requirements.

